

STANDARD ARRIVAL CHART  
INSTRUMENT(STAR) - ICAO

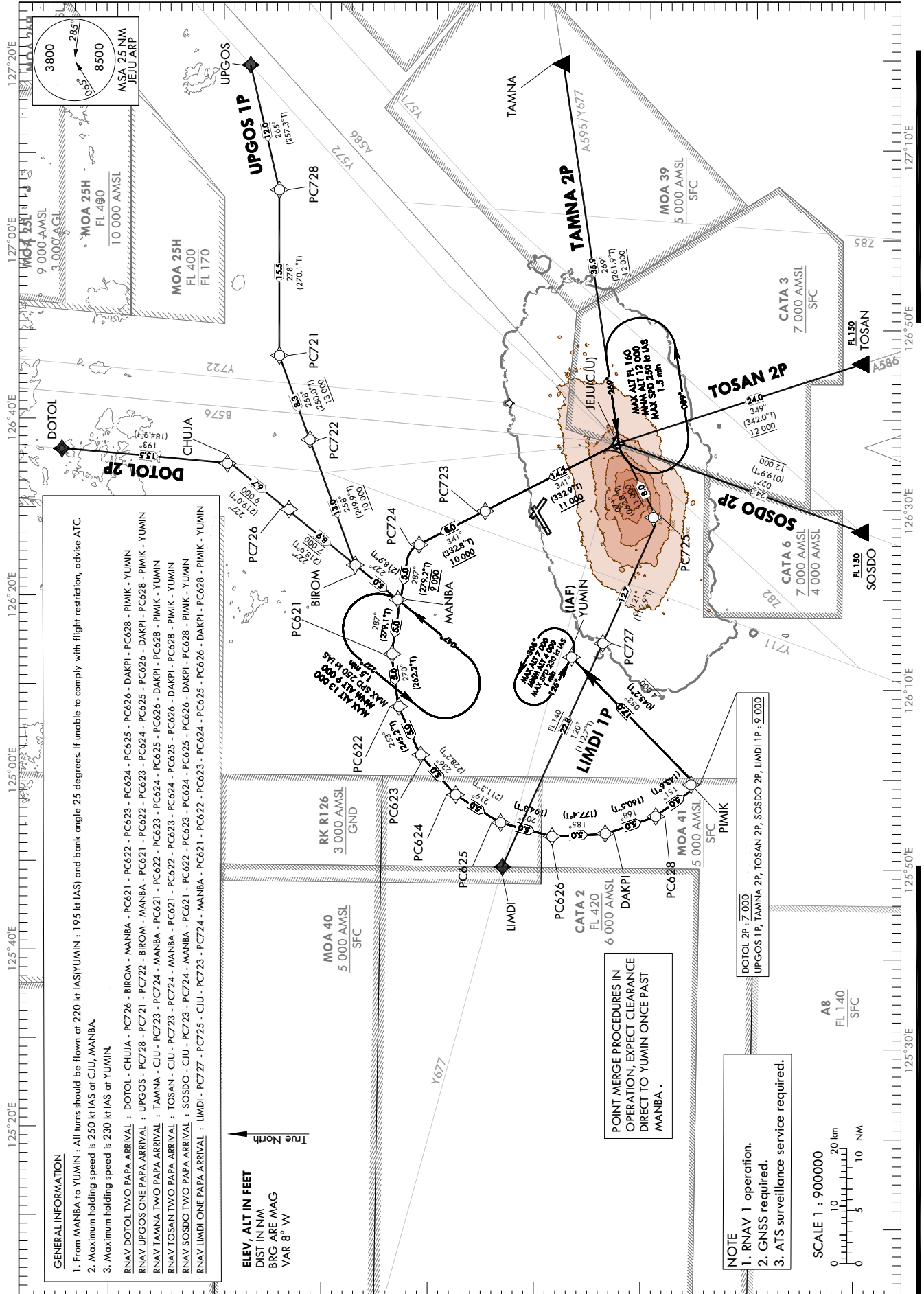
TRANSITION ALT 14 000  
TRANSITION LVL FL 140

JEJU APP 121.2  
JEJU TWR 124.05  
JEJU TWR 118.2  
JEJU TWR 118.55

JEJU/Jeju Intl(RKPC)

RWY 07  
RNAV DOTOL 2P, RNAV UPGOS 1P  
RNAV TAMNA 2P, RNAV TOSAN 2P  
RNAV SOSDO 2P, RNAV LIMDI 1P

Note : Arrival under ICAO Flight Procedures.



Change : Information of airspace restrictions(MOA 25H, 40, A8).

## Standard Instrument Arrival Procedure Coding Tables

## RNAV DOTOL 2P

Serial Number	Path Descriptor	Waypoint Identifier	Fly-over	Course/Track °M(T)	Distance (NM)	Turn direction	Altitude (ft)	Speed (kt)	Coordinates	VPA/RDH	Navigation specification	Remarks
001	IF	DOTOL	-	-	-	-	-	-	34°15'15.4"N 126°36'36.6"E	-	RNAV 1	-
002	TF	CHUJA	-	193(184.9)	15.5	-	-	-	33°59'47.3"N 126°35'00.2"E	-	RNAV 1	-
003	TF	PC726	-	227(219.0)	6.7	-	-9 000	-	33°54'32.2"N 126°29'54.4"E	-	RNAV 1	-
004	TF	BIROM	-	227(218.9)	8.9	-	@7 000	-	33°47'33.9"N 126°23'09.8"E	-	RNAV 1	-
005	TF	MANBA	-	227(218.9)	5.0	-	-	@220	33°43'39.9"N 126°19'24.0"E	-	RNAV 1	Bank angle 25°
006	TF	PC621	-	287(279.1)	5.0	-	-	@220	33°44'27.4"N 126°13'28.9"E	-	RNAV 1	Bank angle 25°
007	TF	PC622	-	270(262.2)	5.0	-	-	@220	33°43'46.4"N 126°07'32.6"E	-	RNAV 1	Bank angle 25°
008	TF	PC623	-	253(245.2)	5.0	-	-	@220	33°41'40.2"N 126°02'06.2"E	-	RNAV 1	Bank angle 25°
009	TF	PC624	-	234(228.2)	5.0	-	-	@220	33°38'19.9"N 125°57'38.2"E	-	RNAV 1	Bank angle 25°
010	TF	PC625	-	219(211.3)	5.0	-	-	@220	33°34'03.1"N 125°54'31.8"E	-	RNAV 1	Bank angle 25°
011	TF	PC626	-	202(194.3)	5.0	-	-	@220	33°29'11.9"N 125°53'02.9"E	-	RNAV 1	Bank angle 25°
012	TF	DAKPI	-	185(177.4)	5.0	-	-	@220	33°24'11.7"N 125°53'19.1"E	-	RNAV 1	Bank angle 25°
013	TF	PC628	-	168(160.5)	5.0	-	-	@220	33°19'28.4"N 125°55'18.5"E	-	RNAV 1	Bank angle 25°
014	TF	PIWIK	-	151(143.6)	5.0	-	@7 000	@220	33°15'26.4"N 125°58'50.7"E	-	RNAV 1	Bank angle 25°
015	TF	YUMIN	-	053(045.2)	17.0	-	+4 000	@195	33°27'25.7"N 126°13'15.5"E	-	RNAV 1	IAF

## RNAV UPGOS 1P

Serial Number	Path Descriptor	Waypoint Identifier	Fly-over	Course/Track °M(T)	Distance (NM)	Turn direction	Altitude (ft)	Speed (kt)	Coordinates	VPA/RDH	Navigation specification	Remarks
001	IF	UPGOS	-	-	-	-	-	-	33°57'33.3"N 127°19'53.0"E	-	RNAV 1	-
002	TF	PC728	-	265(257.3)	12.0	-	-	-	33°54'53.8"N 127°05'49.0"E	-	RNAV 1	-
003	TF	PC721	-	278(270.1)	15.5	-	-	-	33°54'53.3"N 126°47'09.7"E	-	RNAV 1	-
004	TF	PC722	-	258(250.0)	8.3	-	+13 000	-	33°52'02.9"N 126°37'48.9"E	-	RNAV 1	-
005	TF	BIROM	-	258(249.9)	13.0	-	+10 000	-	33°47'33.9"N 126°23'09.8"E	-	RNAV 1	-
006	TF	MANBA	-	227(218.9)	5.0	-	@9 000	@220	33°43'39.9"N 126°19'24.0"E	-	RNAV 1	Bank angle 25°
007	TF	PC621	-	287(279.1)	5.0	-	-	@220	33°44'27.4"N 126°13'28.9"E	-	RNAV 1	Bank angle 25°
008	TF	PC622	-	270(262.2)	5.0	-	-	@220	33°43'46.4"N 126°07'32.6"E	-	RNAV 1	Bank angle 25°
009	TF	PC623	-	253(245.2)	5.0	-	-	@220	33°41'40.2"N 126°02'06.2"E	-	RNAV 1	Bank angle 25°
010	TF	PC624	-	234(228.2)	5.0	-	-	@220	33°38'19.9"N 125°57'38.2"E	-	RNAV 1	Bank angle 25°
011	TF	PC625	-	219(211.3)	5.0	-	-	@220	33°34'03.1"N 125°54'31.8"E	-	RNAV 1	Bank angle 25°
012	TF	PC626	-	202(194.3)	5.0	-	-	@220	33°29'11.9"N 125°53'02.9"E	-	RNAV 1	Bank angle 25°
013	TF	DAKPI	-	185(177.4)	5.0	-	-	@220	33°24'11.7"N 125°53'19.1"E	-	RNAV 1	Bank angle 25°
014	TF	PC628	-	168(160.5)	5.0	-	-	@220	33°19'28.4"N 125°55'18.5"E	-	RNAV 1	Bank angle 25°
015	TF	PIWIK	-	151(143.6)	5.0	-	@9 000	@220	33°15'26.4"N 125°58'50.7"E	-	RNAV 1	Bank angle 25°
016	TF	YUMIN	-	053(045.2)	17.0	-	+4 000	@195	33°27'25.7"N 126°13'15.5"E	-	RNAV 1	IAF

RNAV TAMNA 2P

Serial Number	Path Descriptor	Waypoint Identifier	Fly-over	Course/Track M(°T)	Distance (NM)	Turn direction	Altitude (ft)	Speed (kt)	Coordinates	VPA/ BDH	Navigation specification	Remarks
001	IF	TAMNA	-	-	-	-	-	-	33°28'15.5"N 127°19'53.0"E	-	RNAV 1	-
002	TF	CIU	-	269(261.9)	35.9	-	+12 000	-	33°23'04.6"N 126°37'26.8"E	-	RNAV 1	-
003	TF	PC723	-	341(332.9)	14.2	-	+11 000	-	33°35'44.3"N 126°29'41.9"E	-	RNAV 1	-
004	TF	PC724	-	341(332.8)	8.0	-	+10 000	-	33°42'52.0"N 126°25'19.1"E	-	RNAV 1	-
005	TF	MANBA	-	287(279.2)	5.0	-	@9 000	@220	33°43'39.9"N 126°19'24.0"E	-	RNAV 1	Bank angle 25°
006	TF	PC621	-	287(279.1)	5.0	-	-	@220	33°44'27.4"N 126°13'28.9"E	-	RNAV 1	Bank angle 25°
007	TF	PC622	-	270(262.2)	5.0	-	-	@220	33°43'46.4"N 126°07'32.6"E	-	RNAV 1	Bank angle 25°
008	TF	PC623	-	253(245.2)	5.0	-	-	@220	33°41'40.2"N 126°02'06.2"E	-	RNAV 1	Bank angle 25°
009	TF	PC624	-	236(228.2)	5.0	-	-	@220	33°38'19.9"N 125°57'38.2"E	-	RNAV 1	Bank angle 25°
010	TF	PC625	-	219(211.3)	5.0	-	-	@220	33°34'03.1"N 125°54'31.8"E	-	RNAV 1	Bank angle 25°
011	TF	PC626	-	202(194.3)	5.0	-	-	@220	33°29'11.9"N 125°53'02.9"E	-	RNAV 1	Bank angle 25°
012	TF	DAKPI	-	185(177.4)	5.0	-	-	@220	33°24'11.7"N 125°53'19.1"E	-	RNAV 1	Bank angle 25°
013	TF	PC628	-	168(160.5)	5.0	-	-	@220	33°19'28.4"N 125°55'18.5"E	-	RNAV 1	Bank angle 25°
014	TF	PIWIK	-	151(143.6)	5.0	-	@9 000	@220	33°15'26.4"N 125°58'50.7"E	-	RNAV 1	Bank angle 25°
015	TF	YUMIN	-	033(045.2)	17.0	-	+4 000	@195	33°27'25.7"N 126°13'15.5"E	-	RNAV 1	IAF

## RNAV TOSAN 2P

Serial Number	Path Descriptor	Waypoint Identifier	Fly-over	Course/Track M(T)	Distance (NM)	Turn direction	Altitude (ft)	Speed (kt)	Coordinates	VPA/ RDH	Navigation specification	Remarks
001	IF	TOSAN	-	-	-	-	+FL 150	-	33°00'12.0"N 126°46'18.7"E	-	RNAV 1	-
002	TF	CJU	-	349(342.0)	24.0	-	+12 000	-	33°23'04.6"N 126°37'26.8"E	-	RNAV 1	-
003	TF	PC723	-	341(332.9)	14.2	-	+11 000	-	33°35'44.3"N 126°29'41.9"E	-	RNAV 1	-
004	TF	PC724	-	341(332.8)	8.0	-	+10 000	-	33°42'52.0"N 126°25'19.1"E	-	RNAV 1	-
005	TF	MANBA	-	287(279.2)	5.0	-	@9 000	@220	33°43'39.9"N 126°19'24.0"E	-	RNAV 1	Bank angle 25°
006	TF	PC621	-	287(279.1)	5.0	-	-	@220	33°44'27.4"N 126°13'28.9"E	-	RNAV 1	Bank angle 25°
007	TF	PC622	-	270(262.2)	5.0	-	-	@220	33°43'46.4"N 126°07'32.6"E	-	RNAV 1	Bank angle 25°
008	TF	PC623	-	253(245.2)	5.0	-	-	@220	33°41'40.2"N 126°02'06.2"E	-	RNAV 1	Bank angle 25°
009	TF	PC624	-	236(228.2)	5.0	-	-	@220	33°38'19.9"N 125°57'38.2"E	-	RNAV 1	Bank angle 25°
010	TF	PC625	-	219(211.3)	5.0	-	-	@220	33°34'03.1"N 125°54'31.8"E	-	RNAV 1	Bank angle 25°
011	TF	PC626	-	202(194.3)	5.0	-	-	@220	33°29'11.9"N 125°53'02.9"E	-	RNAV 1	Bank angle 25°
012	TF	DAKPI	-	185(177.4)	5.0	-	-	@220	33°24'11.7"N 125°53'19.1"E	-	RNAV 1	Bank angle 25°
013	TF	PC628	-	168(160.5)	5.0	-	-	@220	33°19'28.4"N 125°55'18.5"E	-	RNAV 1	Bank angle 25°
014	TF	PIMK	-	151(143.6)	5.0	-	@9 000	@220	33°15'26.4"N 125°58'50.7"E	-	RNAV 1	Bank angle 25°
015	TF	YUMIN	-	053(045.2)	17.0	-	+4 000	@195	33°27'25.7"N 126°13'15.5"E	-	RNAV 1	IAF

**AIRAC AIP AMDT 6/25**  
**Effective : 1600UTC 9 JUL 2025**

JEJU/Jeju Intl(RKPC)  
RWY 07

RNAV SOSDO 2P, RNAV LIMDI 1P

## AERONAUTICAL DATA TABULATION

Standard Instrument Arrival Procedure Coding Tables

RNAV SOSDO 2P												
Serial Number	Path Descriptor	Waypoint Identifier	Fly-over	Course/Track M(T)	Distance (NM)	Turn direction	Altitude (ft)	Speed (kt)	Coordinates	VPA/ RDH	Navigation specification	Remarks
001	IF	SOSDO	-	-	-	-	+FL 150	-	33°00'12.0"N 126°27'35.0"E	-	RNAV 1	-
002	TF	CJU	-	027(019.9)	24.3	-	+12 000	-	33°23'04.6"N 126°37'26.8"E	-	RNAV 1	-
003	TF	PC723	-	341(332.9)	14.2	-	+11 000	-	33°35'44.3"N 126°29'41.9"E	-	RNAV 1	-
004	TF	PC724	-	341(332.8)	8.0	-	+10 000	-	33°42'52.0"N 126°25'19.1"E	-	RNAV 1	-
005	TF	MANBA	-	287(279.2)	5.0	-	@9 000	@220	33°43'39.9"N 126°19'24.0"E	-	RNAV 1	Bank angle 25°
006	TF	PC621	-	287(279.1)	5.0	-	-	@220	33°44'27.4"N 126°13'28.9"E	-	RNAV 1	Bank angle 25°
007	TF	PC622	-	270(262.2)	5.0	-	-	@220	33°43'46.4"N 126°07'32.6"E	-	RNAV 1	Bank angle 25°
008	TF	PC623	-	253(245.2)	5.0	-	-	@220	33°41'40.2"N 126°02'06.2"E	-	RNAV 1	Bank angle 25°
009	TF	PC624	-	236(228.2)	5.0	-	-	@220	33°38'19.9"N 125°57'38.2"E	-	RNAV 1	Bank angle 25°
010	TF	PC625	-	219(211.3)	5.0	-	-	@220	33°34'03.1"N 125°54'31.8"E	-	RNAV 1	Bank angle 25°
011	TF	PC626	-	202(194.3)	5.0	-	-	@220	33°29'11.9"N 125°53'02.9"E	-	RNAV 1	Bank angle 25°
012	TF	DAKPI	-	185(177.4)	5.0	-	-	@220	33°24'11.7"N 125°53'19.1"E	-	RNAV 1	Bank angle 25°
013	TF	PC628	-	168(160.5)	5.0	-	-	@220	33°19'28.4"N 125°55'18.5"E	-	RNAV 1	Bank angle 25°
014	TF	PIMIK	-	151(143.6)	5.0	-	@9 000	@220	33°15'26.4"N 125°58'50.7"E	-	RNAV 1	Bank angle 25°
015	TF	YUMIN	-	053(045.2)	17.0	-	+4 000	@195	33°27'25.7"N 126°13'15.5"E	-	RNAV 1	IAF

RNAV LIMDI 1P												
Serial Number	Path Descriptor	Waypoint Identifier	Fly-over	Course/Track M(T)	Distance (NM)	Turn direction	Altitude (ft)	Speed (kt)	Coordinates	VPA/ RDH	Navigation specification	Remarks
001	IF	LIMDI	-	-	-	-	-	-	33°33'13.3"N 125°49'53.0"E	-	RNAV 1	-
002	TF	PC727	-	120(112.7)	22.8	-	+FL 140	-	33°24'23.2"N 126°14'58.9"E	-	RNAV 1	-
003	TF	PC725	-	121(112.9)	12.7	-	-	-	33°19'25.2"N 126°28'56.9"E	-	RNAV 1	-
004	TF	CJU	-	071(062.8)	8.0	-	+11 000	-	33°23'04.6"N 126°37'26.8"E	-	RNAV 1	-
005	TF	PC723	-	341(332.9)	14.2	-	+11 000	-	33°35'44.3"N 126°29'41.9"E	-	RNAV 1	-
006	TF	PC724	-	341(332.8)	8.0	-	+10 000	-	33°42'52.0"N 126°25'19.1"E	-	RNAV 1	-
007	TF	MANBA	-	287(279.2)	5.0	-	@9 000	@220	33°43'39.9"N 126°19'24.0"E	-	RNAV 1	Bank angle 25°
008	TF	PC621	-	287(279.1)	5.0	-	-	@220	33°44'27.4"N 126°13'28.9"E	-	RNAV 1	Bank angle 25°
009	TF	PC622	-	270(262.2)	5.0	-	-	@220	33°43'46.4"N 126°07'32.6"E	-	RNAV 1	Bank angle 25°
010	TF	PC623	-	253(245.2)	5.0	-	-	@220	33°41'40.2"N 126°02'06.2"E	-	RNAV 1	Bank angle 25°
011	TF	PC624	-	236(228.2)	5.0	-	-	@220	33°38'19.9"N 125°57'38.2"E	-	RNAV 1	Bank angle 25°
012	TF	PC625	-	219(211.3)	5.0	-	-	@220	33°34'03.1"N 125°54'31.8"E	-	RNAV 1	Bank angle 25°
013	TF	PC626	-	202(194.3)	5.0	-	-	@220	33°29'11.9"N 125°53'02.9"E	-	RNAV 1	Bank angle 25°
014	TF	DAKPI	-	185(177.4)	5.0	-	-	@220	33°24'11.7"N 125°53'19.1"E	-	RNAV 1	Bank angle 25°
015	TF	PC628	-	168(160.5)	5.0	-	-	@220	33°19'28.4"N 125°55'18.5"E	-	RNAV 1	Bank angle 25°
016	TF	PIMIK	-	151(143.6)	5.0	-	@9 000	@220	33°15'26.4"N 125°58'50.7"E	-	RNAV 1	Bank angle 25°
017	TF	YUMIN	-	053(045.2)	17.0	-	+4 000	@195	33°27'25.7"N 126°13'15.5"E	-	RNAV 1	IAF

Change : Information of course/track and speed restriction.

AERONAUTICAL DATA TABULATION

Standard Instrument Arrival Procedure Coding Tables

HOLDING PROCEDURE		Path Descriptor	Waypoint Identifier	Fly- over	Course/Track °M(°T)	Time (min)	Turn direction	Altitude (ft)	Speed (kt)	Coordinates	VPA/ RDH	Navigation specification	Remarks
RNAV DOTOL 2P		HM	MANBA	Y	047(038.9)	1.5	L	-13 000 +9 000	-250	33°43'39.9"N 126°19'24.0"E	-	RNAV 1	-
		HM	YUMIN	Y	126(118.3)	1.0	L	-7 000 +4 000	-230	33°27'25.7"N 126°13'15.5"E	-	RNAV 1	-
RNAV UPGOS 1P		HM	MANBA	Y	047(038.9)	1.5	L	-13 000 +9 000	-250	33°43'39.9"N 126°19'24.0"E	-	RNAV 1	-
		HM	YUMIN	Y	126(118.3)	1.0	L	-7 000 +4 000	-230	33°27'25.7"N 126°13'15.5"E	-	RNAV 1	-
RNAV TAMNA 2P		HM	CJU	Y	269(261.9)	1.5	L	-FL 160 +12 000	-250	33°23'04.6"N 126°37'26.8"E	-	RNAV 1	-
		HM	MANBA	Y	047(038.9)	1.5	L	-13 000 +9 000	-250	33°43'39.9"N 126°19'24.0"E	-	RNAV 1	-
		HM	YUMIN	Y	126(118.3)	1.0	L	-7 000 +4 000	-230	33°27'25.7"N 126°13'15.5"E	-	RNAV 1	-
		HM	CJU	Y	269(261.9)	1.5	L	-FL 160 +12 000	-250	33°23'04.6"N 126°37'26.8"E	-	RNAV 1	-
RNAV SOSDO 2P		HM	MANBA	Y	047(038.9)	1.5	L	-13 000 +9 000	-250	33°43'39.9"N 126°19'24.0"E	-	RNAV 1	-
		HM	YUMIN	Y	126(118.3)	1.0	L	-7 000 +4 000	-230	33°27'25.7"N 126°13'15.5"E	-	RNAV 1	-
		HM	CJU	Y	269(261.9)	1.5	L	-FL 160 +12 000	-250	33°23'04.6"N 126°37'26.8"E	-	RNAV 1	-
		HM	MANBA	Y	047(038.9)	1.5	L	-13 000 +9 000	-250	33°43'39.9"N 126°19'24.0"E	-	RNAV 1	-
RNAV LUMDI 1P		HM	MANBA	Y	047(038.9)	1.5	L	-13 000 +9 000	-250	33°43'39.9"N 126°19'24.0"E	-	RNAV 1	-
		HM	YUMIN	Y	126(118.3)	1.0	L	-7 000 +4 000	-230	33°27'25.7"N 126°13'15.5"E	-	RNAV 1	-

Change : Information of course/track.

**INTENTIONALLY**

**LEFT**

**BLANK**

STANDARD ARRIVAL CHART  
INSTRUMENT(STAR) - ICAO

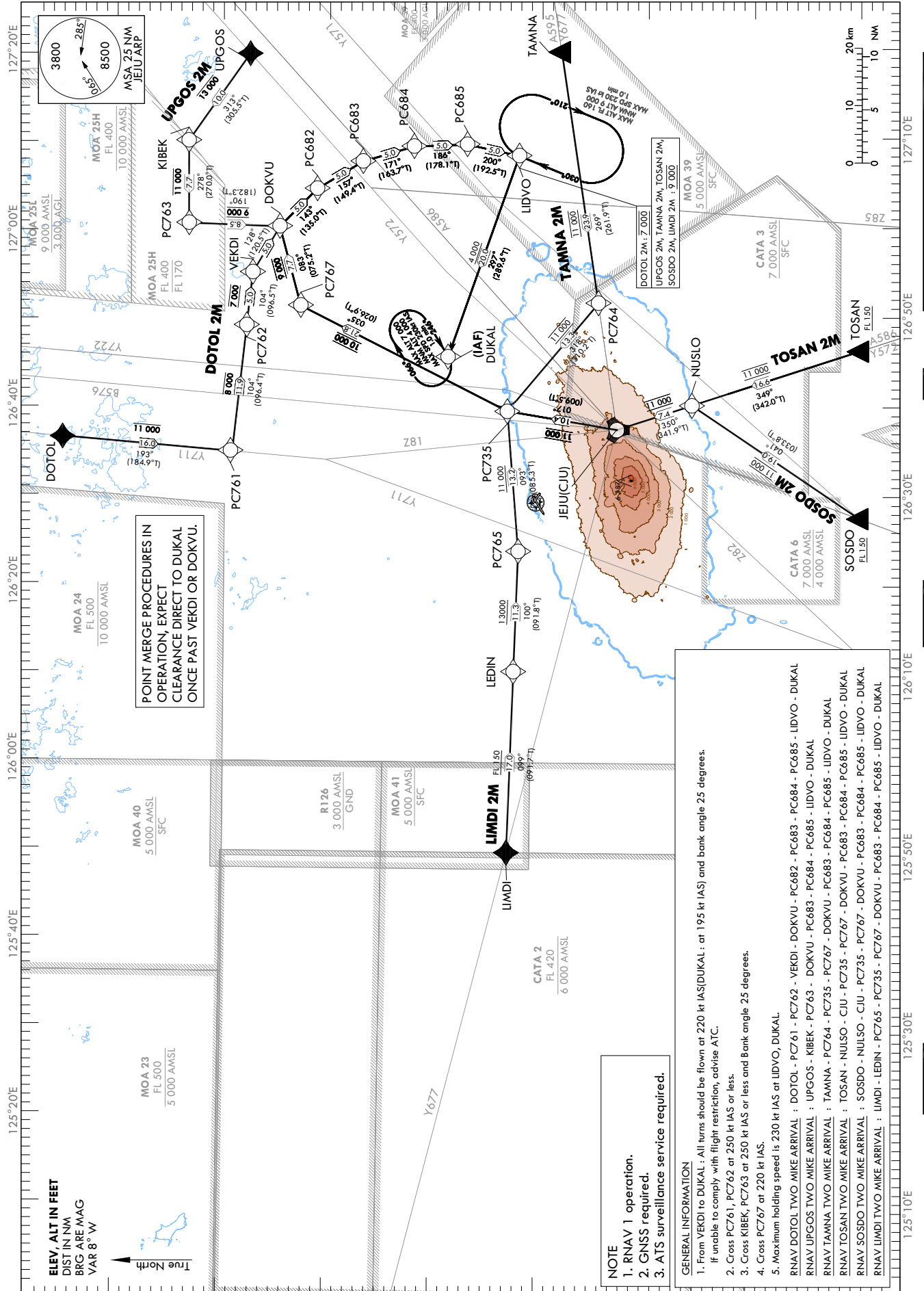
TRANSITION ALT 14 000  
TRANSITION LVL FL 140

JEJU APP 121.2  
JEJU TWR 124.05  
JEJU TWR 118.2  
JEJU TWR 118.55

JEJU/Jeju Intl(RKPC)

RWY 25  
RNAV DOTOL 2M, RNAV UPGOS 2M  
RNAV TAMNA 2M, RNAV TOSAN 2M  
RNAV SOSDO 2M, RNAV LIMDI 2M

Note : Arrival under ICAO Flight Procedures.



Change : Information of airspace restrictions(MOA 23, 24, 25H) and Amended ALT restriction for PC762.

## Standard Instrument Arrival Procedure Coding Tables

RNAV DOTOL 2M

Serial Number	Path Descriptor	Waypoint Identifier	Flv-over	Course/Track °/M(T)	Distance (NM)	Turn direction	Altitude (ft)	Speed (kt)	Coordinates	VPA/ RDH	Navigation specification	Remarks
001	IF	DOTOL	-	-	-	-	-	-	34°15'15.4"N 126°36'36.6"E	-	RNAV 1	-
002	TF	PC761	-	193(184.9)	16.0	-	-11 000	-250	33°59'17.3"N 126°34'57.1"E	-	RNAV 1	-
003	TF	PC762	-	104(096.4)	11.9	-	-8 000	-250	33°57'56.9"N 126°49'10.5"E	-	RNAV 1	-
004	TF	VEKDI	-	104(096.5)	5.0	-	@7 000	@220	33°57'22.6"N 126°55'08.8"E	-	RNAV 1	Bank angle 25°
005	TF	DOKVU	-	128(120.5)	5.0	-	-	@220	33°54'49.8"N 127°00'19.2"E	-	RNAV 1	Bank angle 25°
006	TF	PC682	-	143(135.0)	5.0	-	-	@220	33°51'17.4"N 127°04'34.2"E	-	RNAV 1	Bank angle 25°
007	TF	PC683	-	157(149.4)	5.0	-	-	@220	33°46'58.8"N 127°07'37.7"E	-	RNAV 1	Bank angle 25°
008	TF	PC684	-	171(163.7)	5.0	-	-	@220	33°42'10.3"N 127°09'18.3"E	-	RNAV 1	Bank angle 25°
009	TF	PC685	-	186(178.1)	5.0	-	-	@220	33°37'09.9"N 127°09'30.1"E	-	RNAV 1	Bank angle 25°
010	TF	UIDVO	-	200(192.5)	5.0	-	@7 000	@220	33°32'16.4"N 127°08'12.5"E	-	RNAV 1	Bank angle 25°
011	TF	DUKAL	-	297(289.6)	20.0	-	+4 000	@195	33°38'58.6"N 126°45'38.8"E	-	RNAV 1	IAF

RNAV UPGOS 2M

Serial Number	Path Descriptor	Waypoint Identifier	Flv-over	Course/Track °/M(T)	Distance (NM)	Turn direction	Altitude (ft)	Speed (kt)	Coordinates	VPA/ RDH	Navigation specification	Remarks
001	IF	UPGOS	-	-	-	-	-	-	33°57'33.3"N 127°19'53.0"E	-	RNAV 1	-
002	TF	KIBEK	-	313(305.5)	10.0	-	-13 000	-250	34°03'22.7"N 127°10'02.9"E	-	RNAV 1	Bank angle 25°
003	TF	PC763	-	278(270.0)	7.7	-	-11 000	-250	34°03'22.6"N 127°00'43.6"E	-	RNAV 1	Bank angle 25°
004	TF	DOKVU	-	190(182.3)	8.5	-	@9 000	@220	33°54'49.8"N 127°00'19.2"E	-	RNAV 1	Bank angle 25°
005	TF	PC682	-	143(135.0)	5.0	-	-	@220	33°51'17.4"N 127°04'34.2"E	-	RNAV 1	Bank angle 25°
006	TF	PC683	-	157(149.4)	5.0	-	-	@220	33°46'58.8"N 127°07'37.7"E	-	RNAV 1	Bank angle 25°
007	TF	PC684	-	171(163.7)	5.0	-	-	@220	33°42'10.3"N 127°09'18.3"E	-	RNAV 1	Bank angle 25°
008	TF	PC685	-	186(178.1)	5.0	-	-	@220	33°37'09.9"N 127°09'30.1"E	-	RNAV 1	Bank angle 25°
009	TF	UIDVO	-	200(192.5)	5.0	-	@9 000	@220	33°32'16.4"N 127°08'12.5"E	-	RNAV 1	Bank angle 25°
010	TF	DUKAL	-	297(289.6)	20.0	-	+4 000	@195	33°38'58.6"N 126°45'38.8"E	-	RNAV 1	IAF



JEJU/Jeju Intl(RKPC)  
RWY 25

RNAV TAMNA 2M, RNAV TOSAN 2M

## AERONAUTICAL DATA TABULATION

## Standard Instrument Arrival Procedure Coding Tables

RNAV TAMNA 2M												
Serial Number	Path Descriptor	Waypoint Identifier	Fly-over	Course/Track °(M/T)	Distance (NM)	Turn direction	Altitude (ft)	Speed (kt)	Coordinates	VPA/ RDH	Navigation specification	Remarks
001	IF	TAMNA	-	-	-	-	-	-	33°28'15.5"N 127°19'53.0"E	-	RNAV 1	-
002	TF	PC764	-	269(261.9)	23.9	-	@11 000	-	33°24'50.2"N 126°51'37.6"E	-	RNAV 1	-
003	TF	PC735	-	318(310.2)	13.3	-	@11 000	-	33°33'23.5"N 126°39'30.8"E	-	RNAV 1	-
004	TF	PC767	-	035(026.9)	21.8	-	@10 000	@220	33°52'52.5"N 126°51'23.2"E	-	RNAV 1	-
005	TF	DOKVU	-	083(075.2)	7.7	-	@9 000	@220	33°54'49.8"N 127°00'19.2"E	-	RNAV 1	Bank angle 25°
006	TF	PC682	-	143(135.0)	5.0	-	-	@220	33°51'17.4"N 127°04'34.2"E	-	RNAV 1	Bank angle 25°
007	TF	PC683	-	157(149.4)	5.0	-	-	@220	33°46'58.8"N 127°07'37.7"E	-	RNAV 1	Bank angle 25°
008	TF	PC684	-	171(163.7)	5.0	-	-	@220	33°42'10.3"N 127°09'18.3"E	-	RNAV 1	Bank angle 25°
009	TF	PC685	-	186(178.1)	5.0	-	-	@220	33°37'09.9"N 127°09'30.1"E	-	RNAV 1	Bank angle 25°
010	TF	LIDVO	-	200(192.5)	5.0	-	@9 000	@220	33°32'16.4"N 127°08'12.5"E	-	RNAV 1	Bank angle 25°
011	TF	DUKAL	-	297(289.6)	20.0	-	+4 000	@195	33°38'58.6"N 126°45'38.8"E	-	RNAV 1	IAF

RNAV TOSAN 2M												
Serial Number	Path Descriptor	Waypoint Identifier	Fly-over	Course/Track °(T)	Distance (NM)	Turn direction	Altitude (ft)	Speed (kt)	Coordinates	VPA/ RDH	Navigation specification	Remarks
001	IF	TOSAN	-	-	-	-	+FL 150	-	33°00'12.0"N 126°46'18.7"E	-	RNAV 1	-
002	TF	NUSLO	-	349(342.0)	16.6	-	@11 000	-	33°16'00.2"N 126°40'11.8"E	-	RNAV 1	-
003	TF	CJU	-	350(341.9)	7.4	-	@11 000	-	33°23'04.6"N 126°37'26.8"E	-	RNAV 1	-
004	TF	PC735	-	017(009.5)	10.4	-	@11 000	-	33°33'23.5"N 126°39'30.8"E	-	RNAV 1	-
005	TF	PC767	-	035(026.9)	21.8	-	@10 000	@220	33°52'52.52"N 126°51'23.2"E	-	RNAV 1	-
006	TF	DOKVU	-	083(075.2)	7.7	-	@9 000	@220	33°54'49.8"N 127°00'19.2"E	-	RNAV 1	Bank angle 25°
007	TF	PC682	-	143(135.0)	5.0	-	-	@220	33°51'17.4"N 127°04'34.2"E	-	RNAV 1	Bank angle 25°
008	TF	PC683	-	157(149.4)	5.0	-	-	@220	33°46'58.8"N 127°07'37.7"E	-	RNAV 1	Bank angle 25°
009	TF	PC684	-	171(163.7)	5.0	-	-	@220	33°42'10.3"N 127°09'18.3"E	-	RNAV 1	Bank angle 25°
010	TF	PC685	-	186(178.1)	5.0	-	-	@220	33°37'09.9"N 127°09'30.1"E	-	RNAV 1	Bank angle 25°
011	TF	LIDVO	-	200(192.5)	5.0	-	@9 000	@220	33°32'16.4"N 127°08'12.5"E	-	RNAV 1	Bank angle 25°
012	TF	DUKAL	-	297(289.6)	20.0	-	+4 000	@195	33°38'58.6"N 126°45'38.8"E	-	RNAV 1	IAF

Change : Information of standard instrument arrival procedure for RWY 25.

JEJU/Jeju Intl(RKPC)  
RWY 25

RNAV SOSDO 2M, RNAV LIMDI 2M

## AERONAUTICAL DATA TABULATION

Standard Instrument Arrival Procedure Coding Tables

RNAV SOSDO 2M

Serial Number	Path Descriptor	Waypoint Identifier	Fly-over	Course/Track °M(T)	Distance (NM)	Turn direction	Altitude (ft)	Speed (kt)	Coordinates	VPA/ RDH	Navigation specification	Remarks
001	IF	SOSDO	-	-	-	-	+FL 150	-	33°00'12.0"N 126°27'35.0"E	-	RNAV 1	-
002	TF	NUSLO	-	041(033.8)	19.0	-	@11 000	-	33°16'00.2"N 126°40'11.8"E	-	RNAV 1	-
003	TF	CIU	-	350(341.9)	7.4	-	@11 000	-	33°23'04.6"N 126°37'26.8"E	-	RNAV 1	-
004	TF	PC735	-	017(009.5)	10.4	-	@11 000	-	33°33'23.5"N 126°39'30.8"E	-	RNAV 1	-
005	TF	PC767	-	035(026.9)	21.8	-	@10 000	@220	33°52'52.5"N 126°51'23.2"E	-	RNAV 1	-
006	TF	DOKVU	-	083(075.2)	7.7	-	@9 000	@220	33°54'49.8"N 127°00'19.2"E	-	RNAV 1	Bank angle 25°
007	TF	PC682	-	143(135.0)	5.0	-	-	@220	33°51'17.4"N 127°04'34.2"E	-	RNAV 1	Bank angle 25°
008	TF	PC683	-	157(149.4)	5.0	-	-	@220	33°46'58.8"N 127°07'37.7"E	-	RNAV 1	Bank angle 25°
009	TF	PC684	-	171(163.7)	5.0	-	-	@220	33°42'10.3"N 127°09'18.3"E	-	RNAV 1	Bank angle 25°
010	TF	PC685	-	186(178.1)	5.0	-	-	@220	33°37'09.9"N 127°09'30.1"E	-	RNAV 1	Bank angle 25°
011	TF	LIDVO	-	200(192.5)	5.0	-	@9 000	@220	33°32'16.4"N 127°08'12.5"E	-	RNAV 1	Bank angle 25°
012	TF	DUKAL	-	297(289.6)	20.0	-	+4 000	@195	33°38'58.6"N 126°45'38.8"E	-	RNAV 1	IAF

RNAV LIMDI 2M

Serial Number	Path Descriptor	Waypoint Identifier	Fly-over	Course/Track °M(T)	Distance (NM)	Turn direction	Altitude (ft)	Speed (kt)	Coordinates	VPA/ RDH	Navigation specification	Remarks
001	IF	LIMDI	-	-	-	-	-	-	33°33'13.3"N 125°49'53.0"E	-	RNAV 1	-
002	TF	LEDIN	-	099(091.7)	17.0	-	+FL 150	-	33°32'42.1"N 126°10'14.9"E	-	RNAV 1	-
003	TF	PC765	-	100(091.8)	11.3	-	+13 000	-	33°32'19.6"N 126°23'42.6"E	-	RNAV 1	-
004	TF	PC735	-	093(085.3)	13.2	-	+11 000	-	33°33'23.5"N 126°39'30.8"E	-	RNAV 1	-
005	TF	PC767	-	035(026.9)	21.8	-	@10 000	@220	33°52'52.5"N 126°51'23.2"E	-	RNAV 1	-
006	TF	DOKVU	-	083(075.2)	7.7	-	@9 000	@220	33°54'49.8"N 127°00'19.2"E	-	RNAV 1	Bank angle 25°
007	TF	PC682	-	143(135.0)	5.0	-	-	@220	33°51'17.4"N 127°04'34.2"E	-	RNAV 1	Bank angle 25°
008	TF	PC683	-	157(149.4)	5.0	-	-	@220	33°46'58.8"N 127°07'37.7"E	-	RNAV 1	Bank angle 25°
009	TF	PC684	-	171(163.7)	5.0	-	-	@220	33°42'10.3"N 127°09'18.3"E	-	RNAV 1	Bank angle 25°
010	TF	PC685	-	186(178.1)	5.0	-	-	@220	33°37'09.9"N 127°09'30.1"E	-	RNAV 1	Bank angle 25°
011	TF	LIDVO	-	200(192.5)	5.0	-	@9 000	@220	33°32'16.4"N 127°08'12.5"E	-	RNAV 1	Bank angle 25°
012	TF	DUKAL	-	297(289.6)	20.0	-	+4 000	@195	33°38'58.6"N 126°45'38.8"E	-	RNAV 1	IAF

Change : Information of standard instrument arrival procedure for RWY 25.

JEJU/Jeju Intl(RKPC)  
RWY 25  
HOLDING PROCEDURE

## AERONAUTICAL DATA TABULATION

## Standard Instrument Arrival Procedure Coding Tables

HOLDING PROCEDURE												
Holding Identification	Path Descriptor	Waypoint Identifier	Fly-over	Course/Track °M(°T)	Time (min)	Turn direction	Altitude (ft)	Speed (kt)	Coordinates	VPA/RDH	Navigation specification	Remarks
RNAV DOTOL 2M	HM	LIDVO	Y	030(022.5)	1.0	R	-FL 160 +9 000	-230	33°32'16.4"N 127°08'12.5"E	-	RNAV 1	-
	HM	DUKAL	Y	246(238.7)	1.0	R	-7 000 +4 000	-230	33°38'58.6"N 126°45'38.8"E	-	RNAV 1	-
RNAV UPGOS 2M	HM	LIDVO	Y	030(022.5)	1.0	R	-FL 160 +9 000	-230	33°32'16.4"N 127°08'12.5"E	-	RNAV 1	-
	HM	DUKAL	Y	246(238.7)	1.0	R	-7 000 +4 000	-230	33°38'58.6"N 126°45'38.8"E	-	RNAV 1	-
RNAV TAMNA 2M	HM	LIDVO	Y	030(022.5)	1.0	R	-FL 160 +9 000	-230	33°32'16.4"N 127°08'12.5"E	-	RNAV 1	-
	HM	DUKAL	Y	246(238.7)	1.0	R	-7 000 +4 000	-230	33°38'58.6"N 126°45'38.8"E	-	RNAV 1	-
RNAV TOSAN 2M	HM	LIDVO	Y	030(022.5)	1.0	R	-FL 160 +9 000	-230	33°32'16.4"N 127°08'12.5"E	-	RNAV 1	-
	HM	DUKAL	Y	246(238.7)	1.0	R	-7 000 +4 000	-230	33°38'58.6"N 126°45'38.8"E	-	RNAV 1	-
RNAV SOSDO 2M	HM	LIDVO	Y	030(022.5)	1.0	R	-FL 160 +9 000	-230	33°32'16.4"N 127°08'12.5"E	-	RNAV 1	-
	HM	DUKAL	Y	246(238.7)	1.0	R	-7 000 +4 000	-230	33°38'58.6"N 126°45'38.8"E	-	RNAV 1	-
RNAV LUMDI 2M	HM	LIDVO	Y	030(022.5)	1.0	R	-FL 160 +9 000	-230	33°32'16.4"N 127°08'12.5"E	-	RNAV 1	-
	HM	DUKAL	Y	246(238.7)	1.0	R	-7 000 +4 000	-230	33°38'58.6"N 126°45'38.8"E	-	RNAV 1	-

Change : Information of standard instrument arrival procedure for RWY 25.

**INTENTIONALLY**

**LEFT**

**BLANK**